

Park Community School



much
more than
just a **school**

2020 / 2021

Park Community School



MUNCH Community Pantry



The Apex Centre



Park Design and Print



Our school is set in a stunning park environment for the benefit of the community. Seven years ago our campus was redeveloped using our vision to create a "Cathedral in the Community". Today when you visit you will see the school being used for a wide range of activities and very much at the heart of this community.

Covid-19 Impact

In March 2020 no one could have foreseen that the country would have to adhere to restrictions which would change how we live, operate as a school and as hub of our community.

From April 2020 few bookings have taken place, although in August we were able to open to provide Connect4Summer providing some change for children and parents. This has impacted significantly on our ability to generate income.

However, we did not stand still and you will read about how we have gained funding, opened the Tea Rooms at the Coach House and the Munch Community Pantry.



Successfully raised 155k for community projects

In partnership with RCS awarded £118k to deliver summer holiday activities and food

Our History

- 1958** Broomfield Secondary School opened
- 1988** Broomfield closed
- 1988** Park Community School opened
- 2003** Community Department was formed
- 2010** The Dickinson Centre opened
- 2010** Park Community Ventures Charity formed
- 2012** School rebuilding work starts
- 2013** Park Community Enterprises Limited formed
- 2013** Lease acquired for industrial unit and Park Design and Print established
- 2014** Small holding land leased and Park Small-holding established
- 2014** Moved into new school buildings
- 2015** School rebuilding complete
- 2015** Lease acquired and Apex Construction Centre established
- 2015** Synthetic turf pitch constructed
- 2015** The Hermitage Stream path joined together
- 2016** Springwood Park Pre-School and Nursery established
- 2020** Tea Rooms at The Coach House opens
- 2020** MUNCH Community Pantry opens



much more than just a school



As a school we remained open for our key worker and vulnerable children and introduced measures to ensure everyone's safety including:

- Signage throughout the building
- Increased sanitiser stations
- Year group zones to reduce mixing
- Test and trace systems
- Installation of testing booths to carry out lateral flow tests

Laptops

We were fortunate to receive laptops, funded by the DfE and ASDA Havant superstore, to distribute to students who were without one at home

Remote learning

Students received sets of printed work and remote work via the school website. Live lessons by teachers via video, along with teachers in classrooms in our keyworker school.

Testing

The Theatre became a venue for testing in early 2021 complete with booths. Over 400 tests were carried out on some days.

Flu nasal vaccine

The Dickinson Centre was used by the NHS to administer the nasal spray flu vaccine for children in the area. Clinics took place on a daily basis.



What makes Park Community School different?

The school's staff consists of many teams all working toward the same goal; to ensure that Park is 'Much More Than Just a School' for our students and the community.

much
more than
just a **school**



Student Employment Agency

Over 115 students have had paid employment since we opened our Student Employment Agency in 2017. During the summer, through the Connect4Summer project across Hampshire, Southampton, Portsmouth and Isle of Wight, 112 students were employed, 85% were Year 11 students. Students can only apply if they have good references from key members of school staff and over 96% attendance. Although through our recruitment agency, a number of these students were from Park Community School, creating Connect4Summer meant we were able to offer the opportunity of paid employment to students from other schools.

Our recruitment process requires the student applicant to:

- Complete an application form
- Acquire references from key school staff
- Take part in a group exercise
- Complete individual tasks relating to the position
- Undergo an interview with school staff

Skills and knowledge gained

- Customer care
- Budgeting, counting money
- Event set up and party host
- Time sheet calculations
- IT skills in the workplace
- Self confidence
- Understanding what employers want
- Telephone and office skills
- Time management and prioritising
- General maintenance
- Working to deadlines
- Working as part of a team
- Animal care
- Printing and design work
- Healthy cooking
- Health and safety at work
- Playworking

Positions advertised:

IT Assistant
Performing Arts Technician
Site Team Assistant
Community Assistant
Event Assistant
Animal Care Assistant

Catering Assistant
Receptionist
Classroom Monitor
Print Shop Assistant
Tea Room Assistant
Student Playworker



We pride ourselves on being a quality venue with high levels of customer care for all our visitors. We are very accommodating and flexible to meet customer's individual needs whether it is hiring changing rooms with showers for a football match, to being a beautiful wedding venue.

If you want a meeting space then the Dickinson Centre is well equipped to meet your needs with parking to accommodate attendees.



Open on Christmas Day

Open a minimum 16
hours at weekends

245 seat main theatre

180 seat lecture theatre

Regular hirers

Springwood Park Pre-School
and Nursery

Student Employment Agency

Wedding Venue

3G FIFA accredited
Synthetic Turf Pitch

Party and festival venue

Business meetings in the
Dickinson Centre

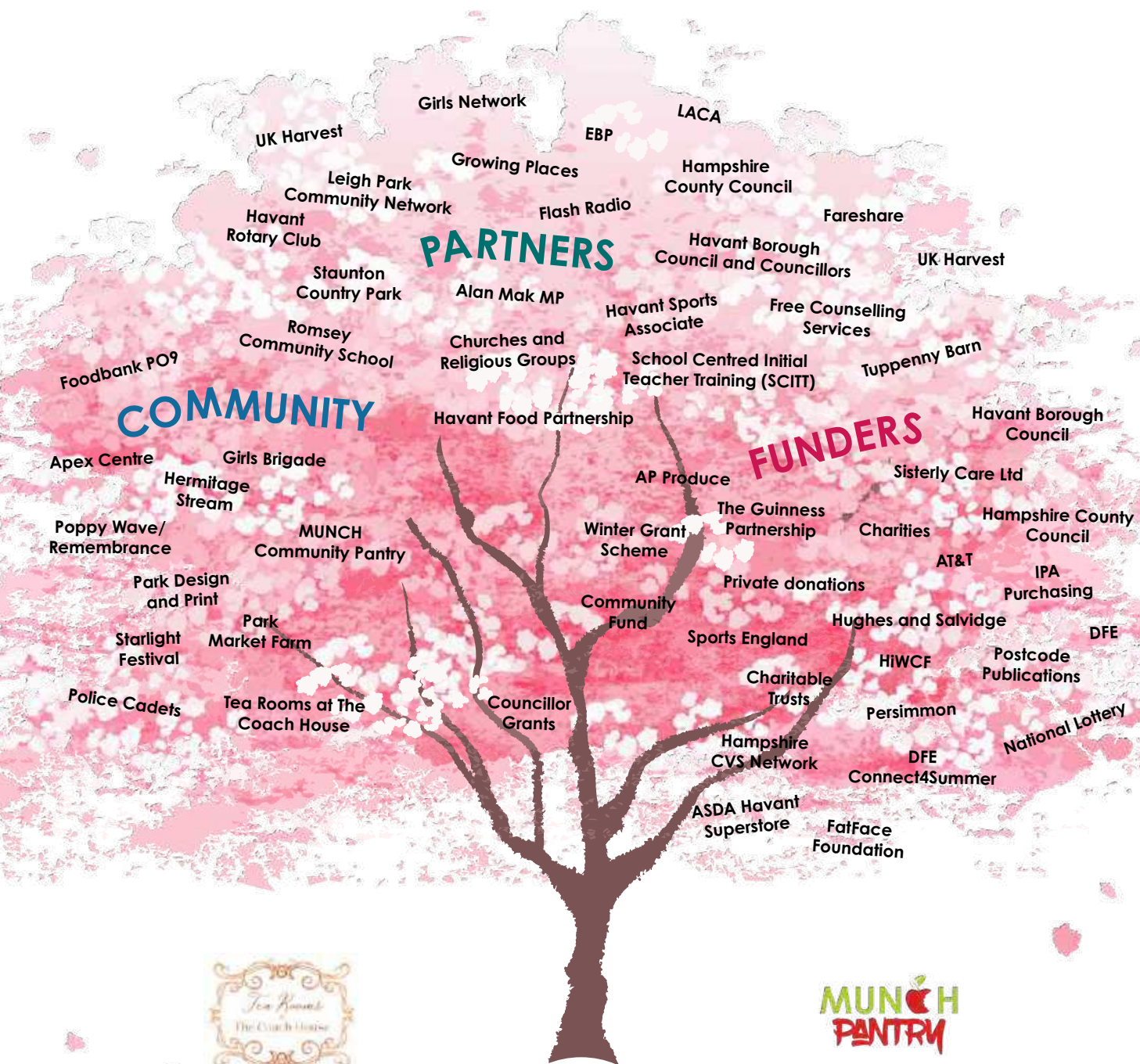
NHS use of Dickinson Centre

Our Partners

We consider ourselves 'much more than just a school' and our tree displays some of the many partners that help us achieve this.

much
more than
just a school

COLLABORATION AND BUSINESS LINKS



ensures that no child, no matter what school or age need go hungry during the holidays.

We established Munch in January 2017. We provide free hot meals for children and their families in the school holidays. This developed into Thursday tea times and monthly Sunday lunches.

More recently we installed a fridge, freezer and shelving in the Dickinson Centre to be able to provide emergency meals at any time for anyone in need.

We are extremely fortunate that we have some very generous funders ranging from those who have donated their pocket money, to organisations that have adopted us as their charity to support.

We thank you all for enabling us to provide food so that no one goes without.

We have some excellent organisations who provide us with large quantities of food, either free, at reduced rates or bulk buy pricing which ensures we can provide more for those in need.

- FareShare
- UK Harvest
- AP Produce
- Morrisons
- Asda Havant Superstore
- Tuppenny Barn

During the Covid pandemic 100 frozen meals have been prepared each day by the Catering Team for the MUNCH freezer, Community Food Pantry and PO9 Foodbank. We look forward to welcoming everyone back into the restaurant as soon as it is possible.

Fantastic news for April 2021
MUNCH will receive
3 years funding
from The National
Lottery





A helping hand not a hand out

Munch Community Pantry opened in November 2020 at The Swallow Pub.

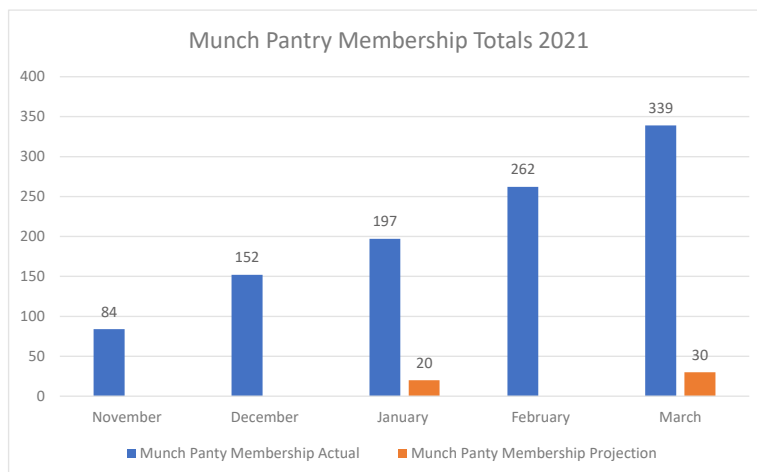
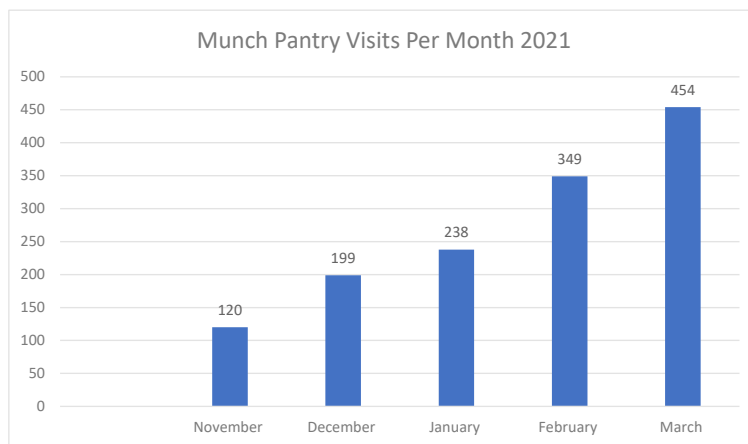
We wanted to establish a Pantry for several years and, as restrictions tightened due to the Covid pandemic and as we saw an increase in families who were struggling financially, it became important for us to do it now.

At this stage we want to give our grateful thanks to the Landlord and Landlady of The Swallow Pub who, from the first meeting, welcomed us and did everything possible to make this work.

Guinness Partnership and Havant Borough Council have both provided funding for set up and first year running costs, and additional funding for food from the Winter Grants Funding administered by Hampshire County Council has helped with the greater than expected numbers.

Through recognition of this pantry and the difference it is making 14 additional pantries have been established across Hampshire through the DWP Winter Grants Funding.

The numbers of customers have steadily risen from day one and we are seeing all ages coming to use the pantry.



MUNCH PANTRY

Would be lost without the food pantry, people that run it are so polite. Nikki

Staff always kind and happy to help and always a great selection of food. Ray

The staff are very friendly and helpful. Lots of choice and good quality, really helps with the food bill each week. Angela

I always find the staff really friendly and helpful. It makes you feel relaxed and comfortable with using the service and not embarrassed. I always look forward to coming to see Darren and Debbie. Linda

Excellent services, really helps us out, really friendly helpful staff as well. Keep up the good work. Sue

Thank you Debbie and Neil. I think this is a great opportunity for those that are in need especially at this time. Very grateful. Sarah

Marvellous. The people who work here are so kind helpful and friendly it makes the difference between heating and eating. Caroline

Amazing place and people help me out a lot as I also cook for elderly people so every bit helps. Kirsty

Friendly, caring, helpful, happy. Charlotte

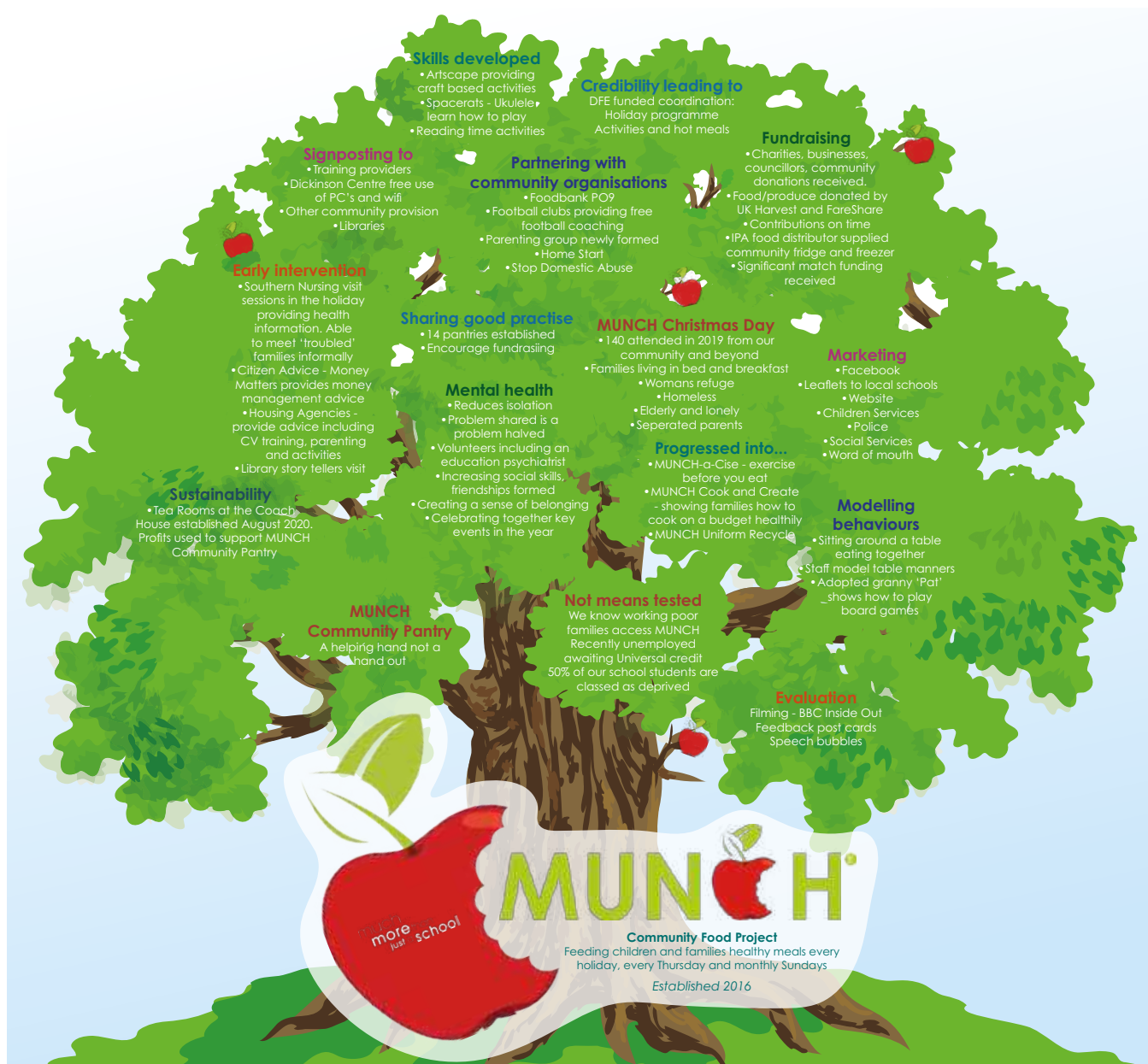
Debbie and Neil were extremely helpful, a pleasure to talk to and a complete credit to our community, thank you. Adi



A BIG THANK YOU TO OUR MUNCH FUNDERS

This project is only possible because people and organisations care. We regularly receive monetary, physical, anonymous and in-kind donations from a variety of sources and our thanks go out to all of them.

Be proud you have made a difference to our community. Thank you



2020-2021 has been a different year for the school catering team. As well as students and staff to feed they have created thousands of meals to freeze for our Munch foobank.

Early on their achievements for the previous year were recognised in through national awards.

We were delighted to announce that Head Chef Steven Cross and the catering team were recognised in the Public Sector Awards 2020 – Chef of the Year, Public Sector Awards 2020 and Catering Team of the Year and also shortlisted and awaiting announcement for the Craft Guild of Chefs Award.

Further recognition of the school's catering came via a request to provide recipe and social media content for Tilda during the pandemic. Steve also created the recipes, videos of cooking and skills training to meet the needs of the Connect4Summer programme.

It is important that our children learn about food and meal preparation. So, three days a week, students from Years 7, 8 and 9 come and work in the school kitchen as part of our Much More Than Just a School lessons. They get to experience the pace of work, heat and variety of cooking that takes place in school on a daily basis.

Most exciting of all was the opening of the Coach House Tea Room in Staunton Country Park in August 2020.



TILDA EARNS TOP MARKS FROM PARK COMMUNITY SCHOOL



Head Chef, Steven Cross

It's no easy feat feeding one thousand pupils and 200 staff in a typical school lunch hour – let alone during a pandemic – but Head Chef, Steven Cross is doing that.

"The school stayed open throughout lockdown to support key workers and vulnerable pupils. The team was reduced but we maintained the same menus to make sure children were well fed."

With a Michelin background and a CV that boasts 22 years of culinary experience including a stint at Buckingham Palace, the multi award-winning Chef joined the Havant based school six years ago.

"Moving from a restaurant to a school was a big learning curve, especially adapting to meet school food guidelines but I had a vision about what a school menu could be like. Fresh, local and nutritious."

"Early on, it was obvious the traditional dishes we all grew up with didn't have a huge amount of appeal with pupils. Fish & Chips on a Friday or a roast dinner are always popular, but we focus on more contemporary options inspired by the high street and food trends."

QUALITY IS EVERYTHING AND MAKING SURE THE CHILDREN HAVE A GOOD, HOT MEAL. TILDA IS A QUALITY PRODUCT. IT'S PREMIUM AND VERY EASY TO USE. IT JUST WORKS FOR MY MENU AND WHAT WE'RE COOKING."



New for 2020 The Coach House Tea Room at Staunton Country Park

We are very excited about this new venture. When the initial consultations took place several years ago to renovate the buildings and grounds of Leigh Park Gardens, Park Community School was invited to join the board managing the process. Children were also involved to ensure use of the park would be engaging for young people.

As a community school with outstanding food we knew the Tea Room would give us the opportunity to showcase our skills and approach to education, while providing great food for the public. Any profits will support the school and community activities including our Munch programme.

We are pleased with the developing working relationship with Staunton Country Park and Hampshire Countryside Service; there is synergy between all partners to provide a great destination in our community for many years to come.

2 national awards

Over 400kg of our own Park Porkies sausages made and eaten

Catering for 7 dietary requirements

7 dedicated organic suppliers

50 jars honey and a few other special products made



New for 2021

A new business venture for 2021. Mobile catering using a catering lorry and Land Rover Defender transformed into a hot drinks vehicle, initially in Leigh Park Gardens to support The Tea Room. This venture is supported by the FatFace Foundation to provide students with the opportunity to learn work skills in the hospitality trade and we hope provide enterprise opportunities by taking it further afield.

The lorry, fitted as a catering kitchen, means we can pop up anywhere and provide hot food. We will be able to use it on the school site and at Staunton County Park at weekends. During holidays it may provide family learning opportunities in areas where it would be difficult for parents to take part in cooking activities. Festivals and fetes may also provide work experience for students as well as the opportunity to promote our great produce and service.



Our hot drinks vehicle awaiting its Tea Rooms branding



Park Community Enterprises Ltd (PCE) was established in 2013 (company number 8519328). Its purpose is to give young people work experience and education in a real life working environment away from the main school site.

PCE started in a small way developing an enterprise project which is known as Park Design and Print Services (PDP). Initially, with the use of digital reproducing equipment, they took on the production of all the internal school reprographics. In doing this they were able to start quality educational printing, exactly meeting the requirements of school staff through bespoke student planners and learning materials.



This has now developed and the school has:

Park Design and Print industrial unit

Apex Construction Centre for the training of young people

Our small holding where we grow our own produce and rear animals



Park Community Ventures is the charity of Park Community School and was formed in 2010 (Charity no 1134562) Its objectives are to fundraise to advance the education and aspirations of students in the school by:

- Developing effective relationships between the staff, parents and others associated with the school
- Engaging in activities or providing facilities or equipment which support the school and advance the education of the students
- The prevention or relief of poverty or being disadvantaged
- Increase opportunities for sports and recreation
- Provide opportunities for economic and community development

The charity has successfully raised over £100k since its formation, some of which has been used for the **MUNCH** project.

The Charity has:

Contributed to students membership costs for sports clubs

Contributed to students fees to visit places of interest

Paid for scouts uniform

Paid for army cadet subs

Paid for transport costs to musical competitions

Supported families with food parcels

Purchased books for hobbies

..... and so much more



Park Design and Print produces work for a large number of customers, including businesses, education providers and charities, both local and national. The income provides further opportunities for young people from the school.

Our industrial unit provides a base for our school students to undertake enterprise projects and also as a base for those students who struggle being within the main school site.



Much More Than Just a School Lessons

Year 7, 8 and 9 students learn about print and design work and take part in fun creative activities which help them to understand what we do and how we do it. Tasks include badge making, book cover design, making booklets and personal logo designing.



66% of turnover is for external customers

Provide printing for over 200 organisations



Park Design and Print, Unit 6 Fulflood Rd, Havant PO9 5AX



**PARK
DESIGN
& PRINT**

CALL OR EMAIL US FOR
MORE INFORMATION!

023 9248 9840

pdp@pcs.hants.sch.uk



The Apex Construction Centre is where Park students undertake construction skills qualifications covering bricklaying, plastering and carpentry.

Students achieve Laser LEAP Level 1 and Level 2 Certificate and Award qualifications. They are able to build footstools, bird boxes, spice racks, coat pegs, table tennis tables and items of their choice.

The Apex is also a venue for the Much More Than Just a School lessons. Students from Years 8 and 9 visit each week to learn about a range of construction skills. This is very popular activity, especially building walls. Students from other years also have taster opportunities at the Apex Centre.



Apex home to YES – Young Enterprise Squad

The Apex Construction Centre has been home to this group of young people who meet on a regular basis and create products to be able to sell. Often lots of experimenting takes place until the final product can be produced. This is supported by members of staff all sharing their skills with the young people.

Sadly, due to Covid-19 this has been put on hold for the time being but will resume as soon as possible. Funding received from PO9 Publications has been kept safe until we can start again.

YES Trips

Further trips are all planned as soon as restrictions are lifted.



The Apex Centre is also home to:

Oarsome Chance who provide students with a range of practical skills.

The Flash On Air digital radio station, a not for profit community radio station run entirely by volunteers, promoting the talents of local unsigned bands, musicians, and singer/songwriters in the greater Portsmouth area. You can listen to them on FM from their studios in the Apex Centre and DAB across Portsmouth and the surrounding area and online everywhere through Tune In and Internet Radio.



Apex Training Centre, Bishopstoke Road, Havant, PO9 5BN



Apex Centre
Park Community School's
Skill Centre

Think it.
Plan it.
Build it.



This year the ability to take key worker and vulnerable students to the small holding to have lots of fresh air and some freedom to relax was just brilliant. The day after each announcement of lockdown we had the birth of piglets which made us smile.

We continue to grow vegetables and fruit for our school kitchen and rear pigs for meat. Students make the connection with what they eat and where and how it is grown.

At school students have the opportunity to study horticulture and gain Level 1 and 2 City and Guilds qualifications.

As part of the Much More Than Just a School lessons, Years 7,8 and 9 go to the small holding each week and spend a morning helping with the animal care, growing vegetables and fruit.



Chickens lay at least 18 eggs a day

186 pigs reared, with another 20 new pigs just arrived

Over 8 working bee hives

50 varieties of fruit and vegetables grown

Home to two goats

50lb of honey produced



New for 2021

With thanks to AT&T Services Inc. construction has begun to create a special place for students at our small holding. The bell tent is somewhere students can enjoy peace and space, to reflect and chat about any concerns they may have with our pastoral team.

The site team have constructed a base so that our bell tent can be used even on wet days.

It has plenty of space for students, and a great feature is that it has a clear roof for star gazing. We hope to use this facility on special evenings with those interested in astronomy. This will be a great asset to us all.



For a second year, in partnership with Romsey Community School, we received funding from the Department for Education to provide Connect4Summer. This year with almost £1 million funding we expanded venues, to include not only Hampshire but in Portsmouth, Southampton and Isle of Wight. Despite Covid-19 we delivered our planned programme outside with families enjoying themselves and staying within their bubbles.

Holiday Child Care Providers

We gave grant funding to Holiday Childcare Providers (HCP) to allow access for free to those children receiving free school meals and with parents who were working. Each parent could book ten days of free childcare. We worked with 28 providers across Hampshire, Portsmouth, Southampton and the Isle of Wight.

West

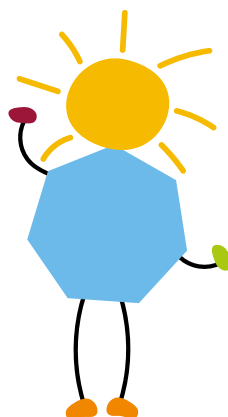
The Romsey School, Romsey
Mountbatten School, Romsey
Pavilion On The Park, Eastleigh
Oakfield Primary School, Totton
Applemore College, Hythe
YMCA, Millbrook
Itchen College Sport Centre, Southampton
Hamble Primary School, Southampton
Vigo Primary School, Andover
The Westgate School, Winchester
John Keble CofE Primary School, Hursley

East

St Vincents College, Gosport
Oak Meadow, Fareham
Harrison Primary School, Fareham
Highbury College, Fareham
Charter Community Sports, Southsea
Springwood Federation, Liss & Petersfield
Mill Hill, Waterlooville
Park Community School, Havant
The Petersfield School, Petersfield
St. Matthews CE Primary School, Liss
Bordon Junior School, Bordon
The Cambridge School, Aldershot
Guillemont Junior School, Farnborough
Fun House, Basingstoke
The Everest School, Basingstoke

Isle of Wight

Winchester House, Shanklin
St Mary's Nursery, Newport



Facts

- 20-day programme
- 29th July – 25th August 2020
- FREE Family Fun Days – 28 programmes
- FREE Teen Projects – 5 programmes
- FREE Holiday Childcare – 28 programmes
- Venues in Hampshire, Southampton, Portsmouth and Isle of Wight
- Daily hot 2-course meal for everyone
- Daily mile completed every day.
- 61 programmes in 50 venues



Family Fun Days

The family fun days took place in 28 venues including:

West

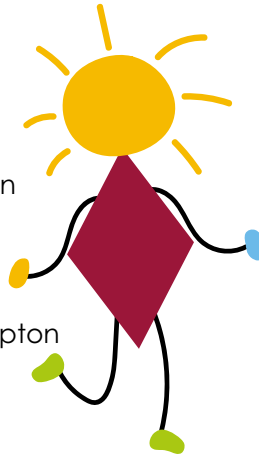
The Romsey School, Romsey
Pavilion On The Park, Eastleigh
Itchen Valley Country Park, Eastleigh
Oakfield Junior School, Totton
Applemore College, Hythe
Itchen Sixth Form College, Southampton
Vigo Primary School, Andover
The Stanmore Centre, Winchester
Regents Park College, Southampton
Foundry Lane Primary School, Southampton

East

St Vincent College, Gosport
Alver Valley Junior School, Gosport
Portchester Community School, Portchester
Medina Primary School, Cosham
ARK Dickens Primary Academy, Portsmouth
ARK Charter Academy, Portsmouth
Cottage Grove Primary School, Portsmouth
Hayling Island Community Centre, Hayling Island
Park Community School, Havant
Weyford Primary School, Bordon
Alderwood Leisure Centre, Aldershot
The Grange Community Junior School, Farnborough
Cranford Park CE Primary School, Yateley
Westside Community Centre, Basingstoke
Popley Field Community Centre, Basingstoke

Isle of Wight

Oakfield Primary School, Ryde
Barton Primary School, Newport
The Bay CE Primary School, Newport



2,800
families
registered

62,240
hours of free
child care

60,000
daily miles
completed

3,400
weekend bags
given out

12,100kg
vegetables used

7,500
individuals
igned up

Open for
20 days
10-3pm

420
employed
58
previously
unemployed

15,000kg
groceries



NEW IN
2020

CONNECT 4 SUMMER

Teen Projects

In 2020 we introduced teen sessions for those aged 12-16. Teens could attend for 3 days or just pick the session that they fancied. As with all the programmes it was free and included a hot meal. We were supported by Personal Best Education who supplied leaders and playworkers to assist the specialists with set up, support the young people and provide meals.

The three sessions were:

- Woodwork with Tux on Tuesdays
- Game design with Stuart on Wednesdays
- Graffiti art with James on Thursdays

Students enjoyed being treated as young adults and engaged in purposeful activities which provided work skills which give opportunities for a window into employment. 100% fed back positively about their experiences and wanted it to continue throughout the year. This is not your typical youth type provision as it is work skills focused.

The Mountbatten School, Romsey
YMCA Winchester House, Shanklin IOW
Itchen Sixth Form College, Southampton
Park Community School, Havant
YMCA, Basingstoke



Words used by children to describe Connect4Summer:





Captured Memories

"I was able to speak to a parent crying at the gate. Mum was completely overwhelmed, it was the first time out of the house with the children. We could show we were doing everything possible to keep her safe and she became a regular." Susan

Visiting the Isle of Wight, Jan spoke to an expectant mum who said that as the Covid-19 shutdown hit, her employer dismissed her with no notice. The family fun days were helping her keep the children fed and she was able to get support from other mums. Jan will be helping in September with some adult courses for her.

"I met a parent who said their child would not eat any vegetables at home but at meal time with us, they have eaten everything." Sam

"At a venue in Winchester a single parent was getting on two buses to come each day. They had been re-homed after a fire in their home. They were living where they knew no one and had very little money for food. Connect4Summer purchased bus passes so they could come daily. Dad was very appreciative." Wendy

Parent went to a school because she needed to register her child to start. Connect4Summer staff were there and said it is done online. Parent had no access to wifi so they made phone calls, then helped her register. The parent who was living in temporary accommodation, then came daily to Family Fun Days. The meals and food bags were a lifeline to her.

"Connect4Summer is an amazing programme which has allowed me to interact with families that I otherwise wouldn't have met. The children and families have all come back more than once and praised the organisation with positive feedback. My oldest brother has worked as a part of our team and my youngest brother has attended most days, allowing us to spend quality time together." Ashlea-Paige

"It has been brilliant! I feel so lucky to see children learning, playing and to be part of their summer. I think that it has been the perfect first job as a Junior Playworker, working with brilliant staff. It has been the highlight of my summer!" Esme

CONNECT 4 SUMMER



www.connect4.org.uk

 @connect4summer2020

 admin@connect4summer.com

 facebook.com/Connect4Summer

Primary and Secondary Teacher Training with Leading Professionals

SCITT teachers celebrating at graduation



The Solent
ScITT
School Centred Initial Teacher Training



About Us

The Solent SCITT was founded in December 2012 and we are currently recruiting our ninth cohort.

Trainees

We are proud to have successfully trained over 150 primary and secondary teachers since 2013 with many now employed in partnership schools and some already promoted to senior school positions.

Subjects

We offer a wide range of SCITT and School Direct teacher training courses. Secondary courses we offer include: Maths, English, Science, History, Geography, MFL, RE, Computing and Dance. SCITT Primary and School Direct salaried places are also available. For experienced unqualified teachers, we offer the Assessment Only route to achieve Qualified Teacher Status (QTS).

PGCE Option

Our links with the University of Portsmouth ensures trainees have the option of achieving QTS with a Postgraduate Certificate in Education (PGCE) and the option of Master's credits.



If you would like more information about teaching and how to apply through UCAS, contact Phil Seery at
info@thesolentscitt.co.uk

Tel: 02392 489 819
www.thesolentscitt.co.uk



Learn from real teachers in real classrooms

“With the school-centred route there is a better ratio of time spent on teaching theory and actual teaching experience.”

SCITT Biology Teacher Michael Bailey who trained with The Solent SCITT and is now employed at his former placement school Crookhorn College.



A SCITT Design and Technology teacher learning skills on the job

Four reasons to train with The Solent SCITT:

1. You will experience a personalised and supportive environment as you work towards QTS.
2. We have strong established school links and a commitment to helping trainees find teaching posts. This is evidenced by our impressive employment success rate with many trainees securing jobs in placement and partnership schools.
3. Our high-quality training, led by experts in the field, will help you focus on your subject or chosen phase whilst working alongside other like-minded professionals. Real 'hands on' learning means you will start in school from September and learn from real teachers in real classrooms.
4. Our course is designed by current teachers, rooted in the reality of life in the classroom with a clear emphasis on putting theory into practice.



If you would like more information about teaching and how to apply through UCAS, contact Phil Seery at info@thesolentscitt.co.uk

Tel: 02392 489 819
www.thesolentscitt.co.uk



Christmas

This is one of the most important times in our school calendar when we all come together to celebrate, a little differently this year.

The Christmas decorations were up and as beautiful as ever, with the addition of our new nativity scene. The characters knitted by our own Assistant Headteacher Soo Bannard and the stable constructed by Steve Wetherell a member of the site team.

In preparation for the last day of term students and staff created an hour-long video of festive music which everyone watched at the same time online.

The catering team provided a Christmas takeaway. We cannot wait till we can celebrate with us all together in true Park tradition.

Generosity of others

We would like to thank the organisations and individuals who gave us money and presents so that we could ensure students and families had food and presents for the Christmas period. We were overwhelmed with the generosity and staff enjoyed dropping off parcels on students' doorsteps, socially distancing at all times, and receiving little messages back saying how much of a difference it had made.

"I would like to say a massive thank you for all the lovely gifts you have brought me, and thank you to everyone who organised it. If you could pass the message on please that would be very appreciated. Once again thank you so much."



AND THAT WAS 2020...







We are open!

Park Community School,
Middle Park Way, Havant, PO9 4BU
Tel: 02392 489811 Bookings: bookings@pcs.hants.sch.uk

The Dickinson Centre, 143 Middle Park Way, Havant, PO9 4DQ
Tel: 02392 489811 Bookings: bookings@pcs.hants.sch.uk

Park Design and Print, 6 Fulflood Road, Havant, PO9 5AX
Tel: 02392 489840 pdp@pcs.hants.sch.uk

The Apex Construction Centre, Bishopstoke Road, Havant, PO9 5BW
Tel: 02392 489848



This booklet was printed by Park Design and Print
Established to give young people real life work experience



Park Community School
Middle Park Way Havant PO9 4BU
023 9248 9811 bookings@pcs.hants.sch.uk